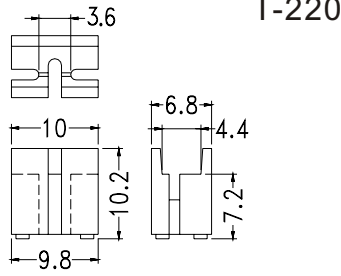


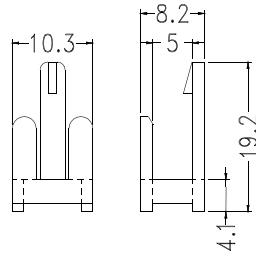
# Electronic Component - TR HOUSING

Hankook Fastener

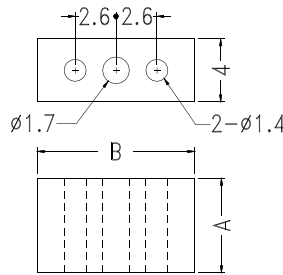


- ◆ MATERIAL: NYLON 66(UL)
- ◆ FLAME CLASS :94V-2
- ◆ COLOR:BLACK
- ◆ UNIT:mm

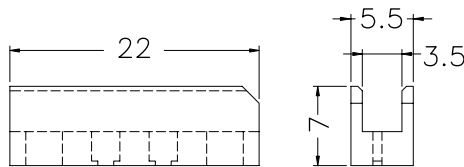
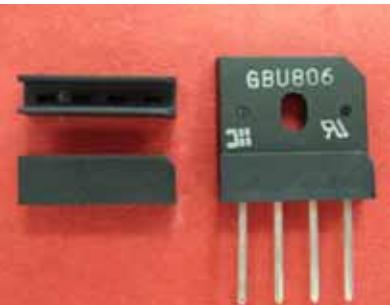
PART NO	PACKAGE
TR-1	1000



PART NO	PACKAGE
TR-2	1000

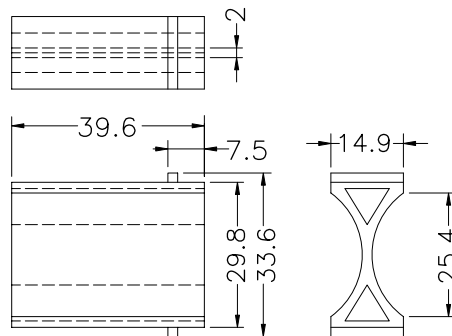


PART NO	A	B	PACKAGE
TR3-3S	3.0	9.8	1000
TR3-3	3.7		
TR3-4	4.0		
TR3-5	5.0	10.0	
TR-3	6.0	9.8	
TR3-7	7.0		



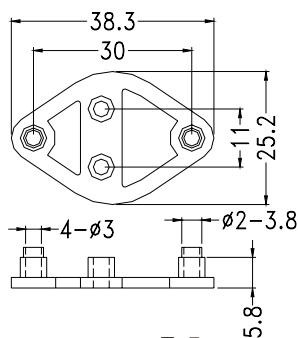
- ◆ MATERIAL: P.B.T
- ◆ COLOR:BLACK
- ◆ UNIT:mm

PART NO	PACKAGE
BGCV-22	500



- ◆ MATERIAL:ABS
- ◆ COLOR:GRAY
- ◆ UNIT:mm

PART NO	PACKAGE
KYPC-40	500



- ◆ MATERIAL: NYLON 66(UL)
- ◆ FLAME CLASS :94V-2
- ◆ COLOR:NATURAL
- ◆ UNIT:mm

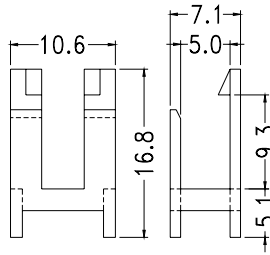
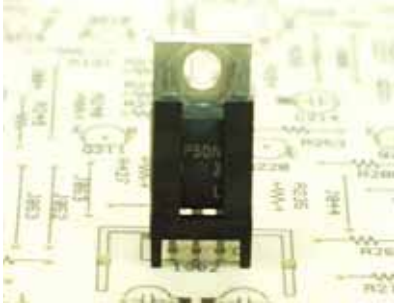
PART NO	PACKAGE
TR-4	500

F-5

- ◆ MATERIAL: NYLON 66(UL)
- ◆ FLAME CLASS :94V-2
- ◆ COLOR: NATURAL
- ◆ UNIT: mm

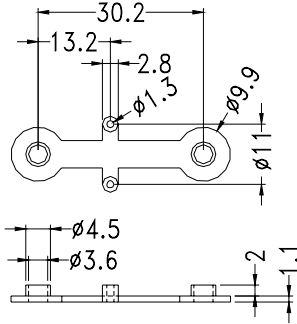
## T-220

PART NO	PACKAGE
TR-5	1000

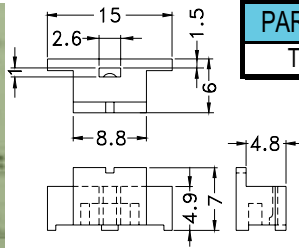


## TO-3

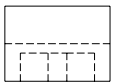
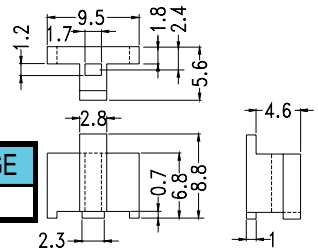
PART NO	PACKAGE
TR-6	1000



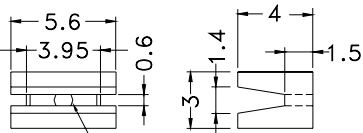
PART NO	PACKAGE
TR-7	1000



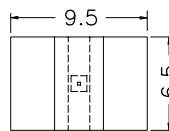
PART NO	PACKAGE
TR-8	1000



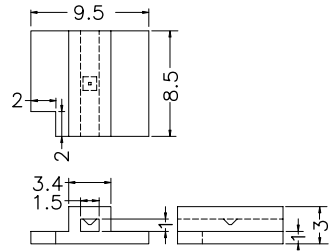
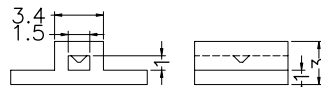
PART NO	PACKAGE
TR-9	1000



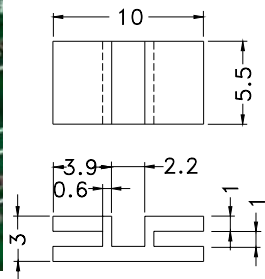
- ◆ MATERIAL: NYLON 66 (UL)
- ◆ FLAME CLASS: 94V-2



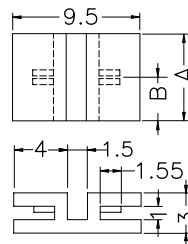
PART NO	PACKAGE
TR-14	1000



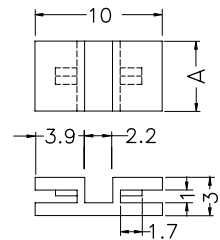
PART NO	PACKAGE
TR-16	1000



PART NO	PACKAGE
TR-10	1000



PART NO	A	B	PACKAGE
TR-11	4.5	2.8	1000
TR-13	6.5	3.25	

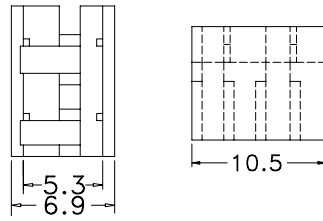


PART NO	A	PACKAGE
TR-10A	5.5	1000
TR-17	7.5	

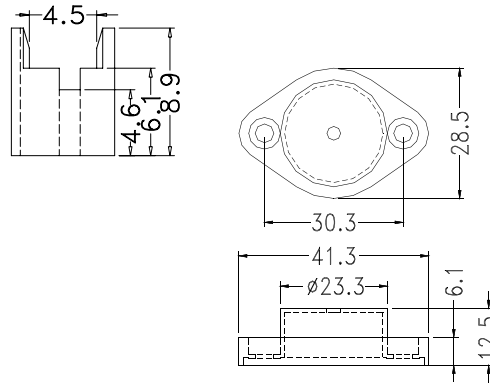
# Electronic Component - TR HOUSING

Hankook Fastener

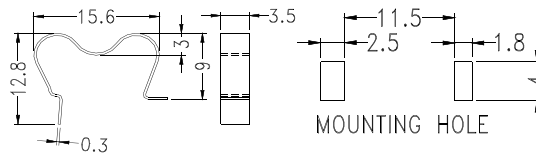
- ◆ MATERIAL: NYLON 66(UL)
- ◆ FLAME CLASS :94V-2
- ◆ COLOR:BLACK
- ◆ UNIT:mm



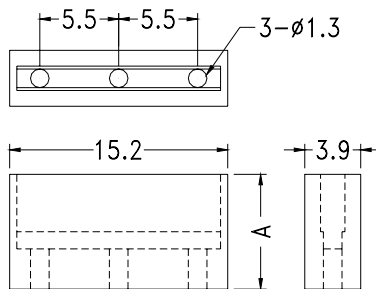
PART NO	PACKAGE
TRD-1	1000



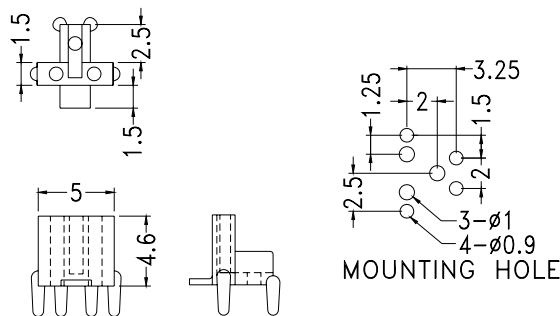
PART NO	PACKAGE
TRC-1	200



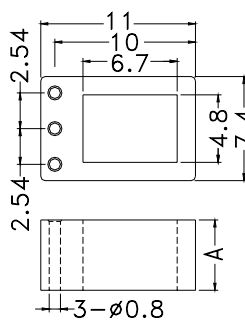
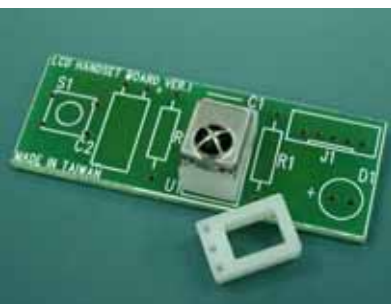
PART NO	PACKAGE
TO-220ST	1000



PART NO	A	PACKAGE
TRW-8	8.0	1000
TRW-10	10.0	



PART NO	PACKAGE
HLS-1	2000



PART NO	A	PACKAGE
★ RCEA-3	3.0	1000
RCEA-5	5.0	